

GridScan/Mini

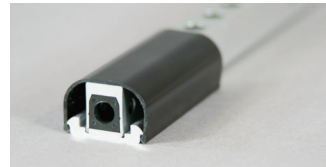
Accessories

MOUNTING KITS



SHIPPING KIT

Part No.	Part Name
114 718	Shipping kit GRS/Mini 90°
Dimensions (l × h × d)	19 × 14 × 14 mm
Material	Aluminum, 2 mm



MOUNTING KIT - VISION SHIELD

Part No.	Part Name
102 423	Mounting kit vision shield, 2100-19
102 424	Mounting kit vision shield, 3000-19 (3,048 mm)
Dimensions (w × h)	26.4 × 18.5 mm
Material	
- Cover	PVC
- Mounting plate	Aluminum

CABLES



CONNECTION CABLE

Part No.	Part Name
111 820	Connection cable, 5 m, 6-pin
109 941	Connection cable, 3 m, M8 female, blue, 6-pin
Diameter	Ø 4.2 mm
Material	PVC
Open wires	AWG26, 6 pcs.
Plug	M8, 6-pin, blue



EXTENSION CABLE (EXTENTION FOR THE CONNECTION CABLE)

Part No.	Part Name
111 821	Extension cable, 10 m, M8 male-female, black, 6-pin
109 841	Extension cable, 3 m, M8 male-female, blue, 6-pin
Diameter	Ø 4.2 mm
Material	PVC
Wires	AWG26
Plug	2 × M8, 6-pin, black (111 821) or blue (109 841)



EXTENSION CABLE (USE AS SYNCHRONIZATION CABLE)

Part No.	Part Name
114 654	Extension cable, 1 m, M8, male-female, 4-pin
104 195	Extension cable, 3 m, M8, male-female, black, 4-pin
114 655	Extension cable, 5 m, M8, male-female, 4-pin
106 169	Extension cable, 10 m, M8, male-female, black, 4-pin
111 125	Extension cable, 30 m, M8, male-female, 4-pin
Diameter	Ø 3.4 mm
Material	PVC
Wires	AWG26
Plug	M8, 4-pin, black

GridScan/Mini

Accessories

POWER SUPPLY



SAFETY UNIT FSS

Part No.	Part Name
114 685	Safety unit FSS 230 VAC
114 741	Safety unit FSS 24 VDC

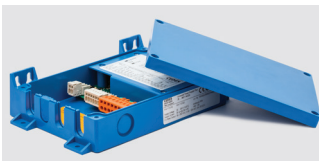
Dimensions (w × h × d)	125 × 35 × 75 mm
Input voltage	115 ... 230 VAC or 24 VDC ±20%
Output	Relay
Sensor connection	12 VDC / 150 mA
Signal input	FSS



UNIVERSAL POWER SUPPLY (UPS)

Part No.	Part Name
103 600	UPS 20-265V AC/DC complete

Dimensions (w × h × d)	200 × 45 × 128 mm
Input voltage	20 ... 265 VAC / 20 ... 375 VDC
Output	Relay
Sensor connection	24 VDC / 300 mA
Signal input	NPN or PNP input



UNIVERSAL POWER SUPPLY PLUS (UPS PLUS)

Part No.	Part Name
113 520	UPS Plus 20-265V AC/DC, packed

Dimensions (w × h × d)	200 × 45 × 128 mm
Input voltage	20 ... 265 VAC / 20 ... 375 VDC
Output	2 × Relay
Sensor connection	24 VDC / 300 mA
Signal input	NPN or PNP input



POWER LINE CONVERTER

Part No.	Part Name
106 666	Power Line Converter, 85 ... 265 VAC

Dimensions (w × h × d)	94.4 × 32.7 × 71.5 mm
Input voltage	85 ... 265 VAC / 24 VDC
Output	Relay
Sensor connection	24 VDC / 250 mA
Signal input	NPN or PNP input



RELAY MODULE

Part No.	Part Name
103 602	Relay Module

Dimensions (w × h × d)	53.5 × 27 × 65.5 mm
Input voltage	20.4 ... 27.6 VDC
Output	Relay
Sensor connection	24 VDC / 250 mA
Signal input	NPN or PNP input