

# TOFniva

## Accessories

### MOUNTING KITS



#### SHIPPING KIT - FLUSH MOUNTING

| Part No. | Part Name                           |
|----------|-------------------------------------|
| 115 255  | Shipping kit TOFniva flush mounting |

#### Dimensions

- Flat frame (w × h × d) 85 × 5.4 × 40 mm
- 6° frame (w × h × d) 85 × 9.23 × 40 mm

#### Material

- Frames ASA, black
- Clips Nylon, black



#### SHIPPING KIT - SURFACE MOUNTING

| Part No. | Part Name                             |
|----------|---------------------------------------|
| 115 256  | Shipping kit TOFniva surface mounting |

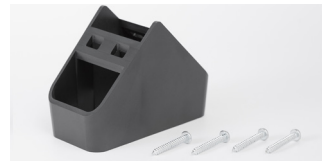
- Dimensions (w × h × d) 89 × 46 × 44 mm
- Material ASA, black



#### SHIPPING KIT - SURFACE MOUNTING

| Part No. | Part Name                                 |
|----------|---|
| 115 257  | Shipping kit TOFniva surface mounting 45° |

- Dimensions (w × h × d) 76 × 73.06 × 44 mm
- Material ASA, black



#### SHIPPING KIT - SURFACE MOUNTING CORNER

| Part No. | Part Name                                    |
|----------|--|
| 115 258  | Shipping kit TOFniva surface mounting corner |

- Dimensions (w × h × d) 88.5 × 63 × 44.4 mm
- Material ASA, black

### CABLES



#### CONNECTION CABLE

| Part No. | Part Name                             |
|----------|---------------------------------------|
| 114 316  | Connection cable, M8 × 1, 6-pin, 2 m  |
| 114 872  | Connection cable, M8 × 1, 6-pin, 5 m  |
| 115 272  | Connection cable, M8 × 1, 6-pin, 10 m |

- Diameter Ø 4.2 mm
- Material PVC
- Open wires AWG26, 6 pcs.
- Plug M8 screwable, 6-pin, blue

# TOFniva

## Accessories

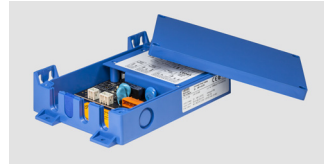
### POWER SUPPLY



#### POWER LINE CONVERTER

| Part No. | Part Name                            |
|----------|--------------------------------------|
| 106 666  | Power Line Converter, 85 ... 265 VAC |

|                        |                         |
|------------------------|-------------------------|
| Dimensions (w × h × d) | 94.4 × 32.7 × 71.5 mm   |
| Input voltage          | 85 ... 265 VAC / 24 VDC |
| Output                 | Relay                   |
| Sensor connection      | 24 VDC / 250 mA         |
| Signal input           | NPN or PNP input        |



#### UNIVERSAL POWER SUPPLY (UPS)

| Part No. | Part Name                  |
|----------|----------------------------|
| 103 600  | UPS 20-265V AC/DC complete |

|                        |                                 |
|------------------------|---------------------------------|
| Dimensions (w × h × d) | 200 × 45 × 128 mm               |
| Input voltage          | 20 ... 265 VAC / 20 ... 375 VDC |
| Output                 | Relay                           |
| Sensor connection      | 24 VDC / 300 mA                 |
| Signal input           | NPN or PNP input                |